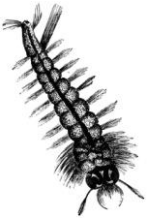




Who lives in ponds?



Dip in the pond to see how many creatures you can find. Some of them are very small so look carefully. Fill in the table below about each animal you find in the pond, or see around it. The first line is filled in as an example.



Name of animal	What does it look like?	Number of legs	How many did you find?
<i>Hoglouse</i>	<i>Flat, brown, like a woodlouse</i>	<i>12</i>	<i>III</i>

